

...about CiS - in a "nut shell"  
Communications Infrastructure Services  
Founded 2003

Offices - Sydney, Melbourne, Jakarta, Kuala Lumpur

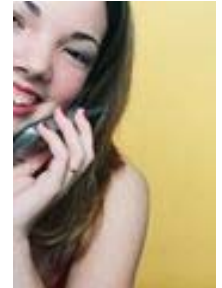
Resources - 45 staff plus contractors

Core Competencies- Technology, Design, Implementation  
Industries - Carriers, Suppliers, Oil & Gas, Financial Advisors

C I S I N T E R N A T I O N A L

# Corporate Profile

## CiS International



### ..about CiS International:

CiS International provides IT and Telecommunications design and project implementation, plus high value consulting services, for wireless and broadband networks in Asia Pacific.

CiS (communications infrastructure services) delivers these services to telecoms carriers and equipment suppliers and to the oil and gas and financial advisory industries.

The company is based in Sydney Australia and has offices in Melbourne, Kuala Lumpur and Jakarta.

### Strengths

The company's strengths derive from the carrier design and construction background of its people, their extensive wireless and mobile experience and technological capability, and an intimate knowledge of the market.

These factors, combine with an ability to address strategic, technical, operational and business issues.

CiS Wireless uses this experience through a process of engagement with associates, clients and partners.



*"Service is all about work ethic and client engagement. Both must be delivered with a passion and routinely integrated into daily activities by staff, associates and partners alike."*

### Services Design

CiS specialises in design services with a focus on fibre access and transmission including surveys, internal and external plant design, drafting, CAD, environmental approvals, land access, preparing construction packs and designing and provisioning customer access networks.

CiS also provides radio design, structural analysis and tower strengthening.

### Implementation

Project Management disciplines provide a backbone to CiS implementation services. Whether acquiring sites or constructing towers in Indonesia, implementing a program office in Australia or integrating and IT network in New Zealand, CiS is trusted in meeting time, cost and quality targets.

### Integration

The very best project managers embrace systems engineering to deliver integrated solutions. This might be integrating a new network component into a live environment or interworking critical communications elements on an offshore platform.

### Consultancy

CiS consultancy services was formed when CiS joined with Hibbard Consulting and Kevin Phillips. CiS Wireless consultancy services include:

- Business Services - strategic analysis, valuations and business planning;
- Technical Services - network planning, design, network audits, operational reviews, vendor reviews, due diligences;
- Engineering Services - with partners radio and network design, cell planning, optimisation, testing, switch and network integration and telepower.

CiS Wireless Pty Ltd  
 43 Victoria St  
 McMahons Point, NSW 2060,  
 AUSTRALIA  
 Mb +61 418 284 643  
 Ph +61 2 9922 2022  
 Email sales@cisinternational.com

PT ECiS Indonesia  
 Wisma Tun Sambanhan  
 Jalan Sultan Sulaiman  
 3rd Floor, Wisma Iskandarsyah  
 Jl. Iskandarsyah Raya No. 66 C  
 Kebayoran Baru Jaksel 12160  
 +62 (811) 960 943

CiS International Sdn Bhd  
 Level 25, Manara Tun Sambanhan  
 Jalan Sultan Sulaiman,  
 50000, Kuala Lumpur, Malaysia  
 Phone: +60 3 2260 7100  
 Mob: +60 12 273 0185

*"Allow CiS to share its experience of operating telecommunications and IT businesses and projects in Asia: be it advising on the creation of shareholder value, developing a business plan or implementing a project, CiS will identify the right person, at the right time, at the right price to meet your needs."*



**CiS International**

### Peter Lodge – Managing Director CiS International and CiS Wireless



25 years experience in the IT and Telecoms industries in executive roles in Asia, UK, USA, NZ and Australia.

Financial consultant. Specialist in Program and Project Management and O&M services. Experienced in very large, complex contract negotiations and business development. Joint venture and business establishment, due diligence and corporate governance. Fellow of Institute of Company Directors and member of the New Zealand Institute of Chartered Accountants.

### Reza Siregar – President Director PT ECiS Indonesia



Educated in Australia. Over 10 years experiences in managing ICT businesses in Indonesia. Joined Eresha Technologies in 2002 and appointed CEO in 2005. Established Eresha Graduate School. Responsible for the day to day operations of the Eresha Group which includes training. IT services, an internet service provider, telecoms project management and construction. Actively involved in the ICT community and Young Entrepreneur Society.

### Jim Pugh – General Manager CiS International (Malaysia) Sdn Bhd



20 years in highly technical roles, most recently as Core Network Specialist providing technical and operational management for Nokia's 3GPP R4 mobile core network, including detailed planning for integration of MSC Servers and MGW. Integration of multi vendor switch networks including Nokia, Ericsson and Hauwei from experience in South America, the Caribbean, Asia, and the Middle East.

Telecoms expert consultant for Time Telecom and Arthur D Little. Project Manager and specialist in VOIP, ATM, ISDN and transmission systems.

### Kevin Phillips – Principal Consultant



15 years experience in design, implementation and operation of large scale telecommunications mobile switching and transmission projects followed by 13 years executive management building and operating Telstra's cellular mobile networks and business in Australia and Asia.

A specialist in cellular mobile, radio, trunk radio and wireless broadband technologies, systems and networks. Involved in product development and technical strategy for 3G cellular and wireless broadband.

### John Hibbard – Principal Consultant



30 years in international telecoms, principally in managing commercial arrangements between carriers.

Managing Director, Global Wholesale for Telstra managing a turnover of \$A1.6 billion and relations with 250 carriers around the world. Inaugural Chairman of Australia Japan Cable consortium.

Experience in many facets of international communications including general management, strategic direction, business development, fixed and mobile technology, commercial and technical operations.